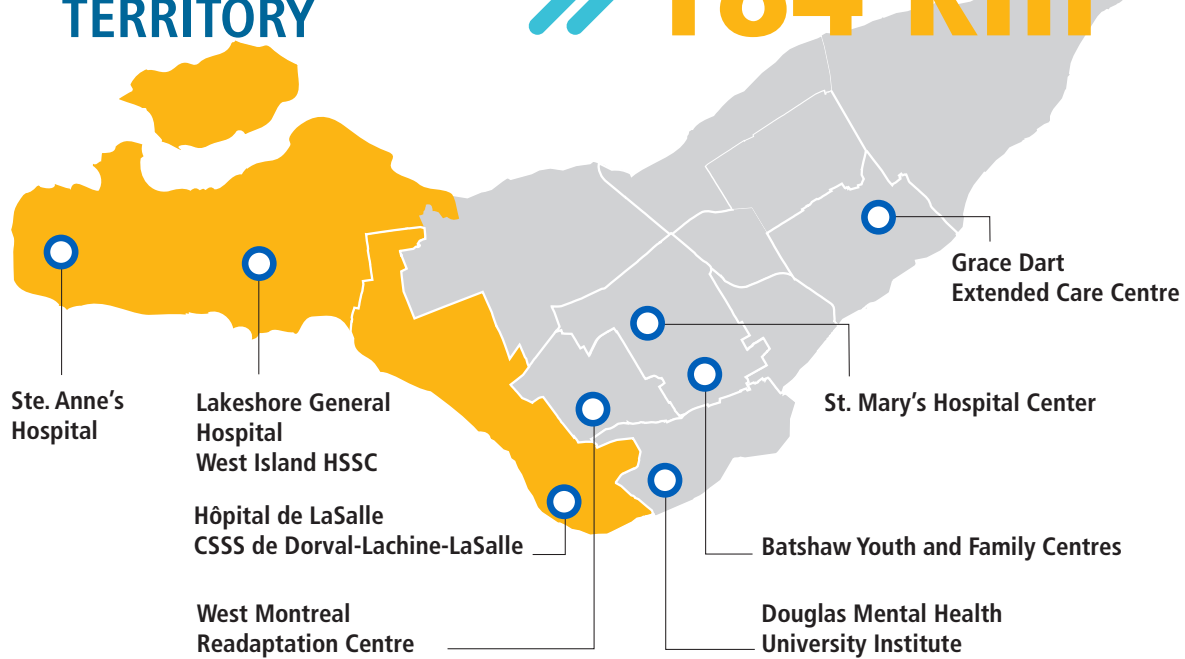



38% OF MONTREAL'S TERRITORY >> 184 km<sup>2</sup>



 **3** General and specialized hospital centres >> 
  **1** Psychiatric hospital >> 
  **2** Research centres

# Douglas

CENTRE DE RECHERCHE  
RESEARCH CENTRE

## Effects of early-life adversity on the brain



Unique expertise in behavioural epigenetics, a field that was developed and has flourished at the Douglas.



## ACCESS Open Minds



National research project that aims to give young Canadians aged 11 to 25 years faster access to higher quality mental health services designed with their distinct needs in mind.



## Douglas-Bell Canada Brain Bank



A unique resource with over 3,600 brains from psychiatrically characterized individuals, and distributing over 2,000 samples per year.



## StoP-Alzheimer's disease



StoP-AD aims to study Alzheimer's disease in its pre-symptomatic stages using basic and clinical approaches.

Centre intégré universitaire de santé et de services sociaux de l'Ouest-de-l'Île-de-Montréal

Québec 